

C. WATERHOUSE & SONS FUNERAL SERVICE

2 0 2 4

PRICE LIST

Traditional values, with a modern approach



Simple Direct Cremation

All inclusive price £1,920.00*

Not everyone's wishes are to have a funeral service. Some people want no fuss or ceremony; whilst other families do not want the expense of a full funeral. A deceased's wishes may state they do not want anyone else to be present, whilst others choose to separate the cremation from the funeral service itself.

We can offer a suitable local cremation at Wealden Crematorium, at low cost with no fuss, which enables families, if they so wish, to have a way to achieve what they want by way of looking after their loved one, but not having a full funeral service. Simple Direct Cremation does not allow for a service in the chapel; so no minister or celebrant is required; no family members, or other mourners attend. Full payment is required in advance of the cremation taking place.

WHAT IS INCLUDED

Conveyance of deceased to our Chapel of Rest, within a 20 mile radius of our office*.

A wood effect foil veneer 'Glenmore' coffin*.

Our professional services, all administrative arrangements & advice.

Doctor's fee for preparing Medical Certificate for Cremation.

Quiet time in our Chapel of Rest with the closed coffin.

Conveyance of the coffin in our hearse, with our bearers, to Wealden Crematorium for cremation, with no service being held, on a mutually agreeable date and time, Monday - Friday.

Option to follow our hearse to, or meet our hearse at, Wealden Crematorium in the grounds to offer a personal farewell and to share some private moments.

Crematorium fees and cardboard ashes casket.

Witnessed scattering of cremated remains in Garden of Remembrance at Wealden Crematorium, or collection by yourself, or delivery to you by us*.

Option to send flowers to accompany the coffin for cremation, and the opportunity to have any personal mementoes placed in coffin.

***ADDITIONAL COST OPTIONS (if applicable)**

- | | |
|---------------------------------------|--|
| - Distance Removals or Ashes Delivery | *£1.50 per mile (over 20+ miles from our office) |
| - Removal by another Funeral Director | Charged for at local tariff |
| - Temporary Hygienic Treatment | £175.00 if requested |
| - *Bariatric coffin surcharge | See page 10 |

Funeral Charges

Our funeral charges consist of a number of different elements, depending on the type and style of funeral service each family requires. Our experienced funeral arrangers will gently go through all the options available, resulting in a simple or bespoke funeral, where we aim to match the needs and exceed the expectations of every family we look after.

In addition to the charges shown on this page, the cost of a coffin will need to be added, as well as other relevant third party disbursements; the costs of which are summarised on the following pages. We ask that a deposit payment of £3,000.00 be made at the time of arranging the funeral, to cover third party disbursements we pay out on your behalf.

Hearse to carry your loved one	£330.00
4 Bearers, smartly dressed to carefully carry the coffin	£330.00
Conveyance of deceased to our Chapel of Rest (within 20 mile radius - weekday) 8.30am-5.00pm	£260.00
Professional Services Charge*	£2,350.00
TOTAL	<u>£3,270.00</u>

*The Professional Services Charge is a proportion of all our business expenses and running costs, not otherwise itemised in our 'Funeral Estimate'. It includes the provision of all necessary staff to make all arrangements for the cremation or burial service; obtaining and processing statutory forms; preparing and attending to all essential documentation; making and receiving all necessary telephone calls; the booking of a minister/celebrant to take the service; the booking of a crematorium or church for the funeral service; receiving floral tributes; placing obituary and funeral notices in local and national newspapers; paying all third party disbursement fees on behalf of families; to providing our in-house 24 hour, 365 days a year, immediate personal service for the assistance and support of the families we care for, both during and after the funeral arrangement.

We pride ourselves that all our services and facilities are provided entirely in-house, by our own team. We own our premises, vehicles, Chapels of Rest and mortuary facilities, all of which are under our direct management. Many others in the funeral industry have to rely heavily, or even entirely, on out-sourcing the majority of what they do to third parties and are thereby unable to offer the same holistic operation and resulting high quality of service, which we are proud to provide to families we are privileged to look after.

Charges, Disbursements & Third Party Services

Celebrant Fee (Crematorium service)	approx. £230 - £250
Church Service and Minister Fees	approx. £228 - £253
Organist Fee	approx. £100 - £135
Verger Fee	approx. £40 - £75
Making arrangements and handling all requirements for a service in church, on a separate occasion, where the coffin is not present (i.e. Memorial or Thanksgiving Service)	£750.00
Burial in Church of England churchyard (not including the service in church)	£366.00
Coffin into church overnight, or on a separate occasion for a later service (includes Hearse, F/D & 4 Bearers; during normal working hours 8.30am-5.00pm)	£600.00
Coffin conveyed into church early (up to 1 hour prior to service)	£130.00
Additional time for a service in church, prior to a Committal service at crematorium or cemetery	£130.00
Additional time for conveying coffin from church direct to crematory, with no service taking place at crematorium	£75.00
Removal of existing memorial headstone prior to a burial	from £150.00
Grave Preparation:	
New Single Depth or Re-open of existing grave	£400.00
New Double Depth	£450.00
New Triple Depth	£500.00
Additional grave preparation equipment (if needed)	At time of need
Rodding of existing grave or plot	£100.00
Capping of grave	from £150.00
Temporary Grave Marker	£25.00

Charges, Disbursements & Third Party Services

Limousine (maximum 7 passengers)	£320.00
Four seater Range Rover Evoque following car	£250.00
Horse Drawn Hearse:	
Carriage & two horses	POA
Carriage & four horses	POA
Our attendance at a Memorial, Thanksgiving, or other Service:	
One Attendant	£82.50
Two Attendants	£165.00
Three Attendants	£247.50
Additional Bearers	£82.50 each
Conveyance of deceased from private home, hospital, care home, or hospice, to our Chapel of Rest -	
Weekdays within working hours 8.30am-5.00pm	£260.00
Out of hours: After 5:00pm-before 8:30am, including nights, weekends & bank holidays	£320.00
Distance Removals: (includes first 20 miles, then £1.50 per mile thereafter)	£260.00
Temporary Hygienic Treatment (Standard)	£175.00
Temporary Hygienic Treatment (COVID-19 or other high risk)	£POA
Removal of pacemaker (for cremation only)	£60.00
Doctor's Fee for Cremation Certificate	£82.00 per Dr

Wealden Crematorium, Horam

- Ceremony Hall

Funeral Service

Monday - Friday 9.00am & 10.00am
45 minute max service time in chapel £779.00

Monday - Friday 11.00am to 4.00pm
45 minute max service time in chapel £971.00

Additional 30 minute service time (weekday) £244.00

Additional 45 minute service time (weekday) £468.00

Funeral Service

Saturday - 9.00am to 11.00am
45 minute max service time in chapel £1,299.00

Committal Service

15 minutes max service time in chapel £748.00

Direct to Crematory

No service in chapel £518.00

Obitus Media Options

Pre-recorded music from Obitus library Included in fees above

Live Service Webcast + 28 days watch again £59.00

Visual Tribute

- Single still photo £18.00

- Slideshow (no accompanying music)
(Max 25 images) £52.00

- Slideshow (with accompanying music)
(Max 25 images) £97.00

Family supplied video £25.00

For other service recording options; additional images for a slideshow;
& family video tributes:

Prices on application

Kent & Sussex Crematorium, Tunbridge Wells

- Main Chapel or Cemetery Chapel

Funeral Service

Monday - Friday 10.00am to 4.00pm
30 minute max service time in chapel £980.00

Additional 30 minutes service time (weekday)
(only available at 9.00am & 4.00pm) £370.00

Additional 45 minutes service time (weekday)
(available on services from 10.00am to 2.30pm) £580.00

Committal Service

9.00am & 9.30am
15 minute max service time in chapel £805.00

Obitus Media Options

Pre-recorded music from Obitus library Included in fees above

Live Service Webcast only £60.00

Live Service Webcast + 28 days watch again £60.00

Visual Tribute

- Single still photo £28.00

- Slideshow (no accompanying music)
(Max 25 images) £48.50

- Slideshow (with accompanying music)
(Max 25 images) £84.50

Family supplied video £30.00

For other service recording options; additional images for a slideshow;
& family video tributes:

Prices on application

Eastbourne Crematorium

- Main Chapel or Family Chapel

Funeral Service

Main Chapel

Monday - Friday 9.00am to 4.00pm
40 minute max service time in chapel

£869.00

Family Chapel

Monday - Friday 9.30am to 3.30pm
40 minute max service time in chapel

£869.00

Additional 40 minute service time (weekday)
from 1.30pm/2.30pm

£100.00

Wesley Media Options

Pre-recorded music from Wesley library

Included in fees above

Live Service Webcast + 7-day on demand

£51.00

Visual Tribute

- Single still photo

£20.00

- Slideshow (no accompanying music)
(Max 25 images)

£30.00

- Slideshow (with accompanying music)
(Max 25 images)

£55.00

For other service recording options; additional images for a slideshow;
& family video tributes:

Prices on application

Hastings Crematorium - Main Chapel

Funeral Service

Monday - Friday 10.15am to 3.15pm

30 minute max service in chapel £922.00

Additional 30 minute service time (weekday) £285.00

Wesley Media Options

Pre-recorded music from Wesley library Included in fees above

Live Service Webcast + 7 days on demand £67.20

Visual Tribute

- Single still photo £24.00

- Slideshow (no accompanying music) £50.40

(Max 25 images)

For every 25 additional images £27.60

- Slideshow (with accompanying music) £99.60

(Max 25 images)

For every 25 additional images £27.60

Family supplied video £24.00

Other service recording options;
family video tributes; DVD or USB service recording Prices on application

Traditional Coffins

Weald

Double moulded handmade solid oak coffin,
with a choice of a raised or flat lid, deep side paneling - **£1,580**

Brightling

Double moulded knotty oak veneer coffin,
with raised lid - **£790**

Ashburnham

Double moulded oak veneer coffin,
with panelled sides and flat lid - **£775**

Bateman

Single moulded simulated limed oak veneer coffin,
with raised lid - **£740**

Mayfield

Single moulded knotted oak veneer coffin - **£730**

Glenmore

Single moulded simulated veneer foil coffin - **£495**

Prices listed above are for coffins up to and including a maximum internal width of 28". For coffins over the width of 28" an additional bariatric surcharge of £200 will be added to the published coffin price, due to the increased costs as charged by our coffin suppliers.

'Traditional Coffins' are fitted on our premises with exterior coffin fittings, along with a choice of interior suite. Please see following pages for range of available options.

Traditional Coffins



(Colours may vary from the examples shown above)

Coffin Exterior Fittings

**Gold Effect Ring
or
Gold Metal Ring**



**Gold Effect
Kingston Bar Handle**



**Gold Effect
Stop-End**



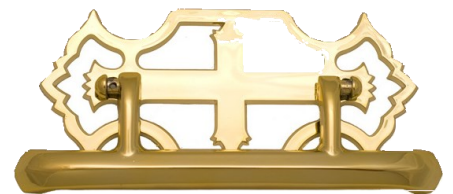
**Wooden
Ring**



**Wooden
Bar Handle**



**Gold Effect
or
Gold Metal
Gothenburg Handle**



**Nickel Effect Ring
or
Nickel Metal Ring**



**Nickel Effect
Kingston Bar Handle**



**Nickel Effect
Stop-End**



Exterior coffin fittings are available to suit all denominational requirements. For funerals resulting in cremation, exterior coffin fittings whilst serving no functional purpose may be preferred for aesthetic reasons. However, all coffins for burial do require handles of some variety.

Our traditional coffin prices include the provision of gold/nickel effect; metal or wood exterior fittings. Metal fittings or solid brass (*) fittings are not an option for cremation.

Coffin Exterior Fittings

**Gold Effect
Malteze
Cross**



**Gold Effect
Masonic
Ornament**



**Gold Effect
Roman Catholic
Filigree Ring**



**Solid
Brass Cross ***



**Solid Brass
Stop-End ***



**Solid Brass
Bar Handle ***



**Wooden
Cross**



**Gold Metal
Roman Catholic
Cross**



**Gold Effect
Roman Catholic
Filigree Cross**



* Solid brass exterior fittings (for burial only) are not included in the coffin prices and are an optional extra at £175.00 per set.

Coffin Interiors

We offer a variety of coffin interiors, with matching gowns. These are included in the price of the coffin.

Swansdown



White Spot



Ivory



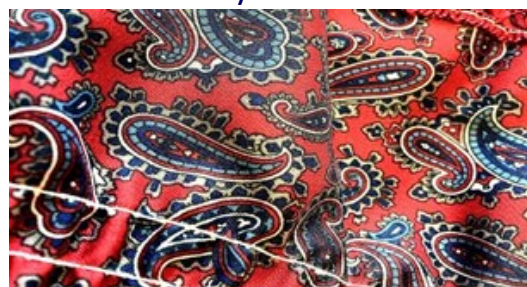
Broderie Anglaise



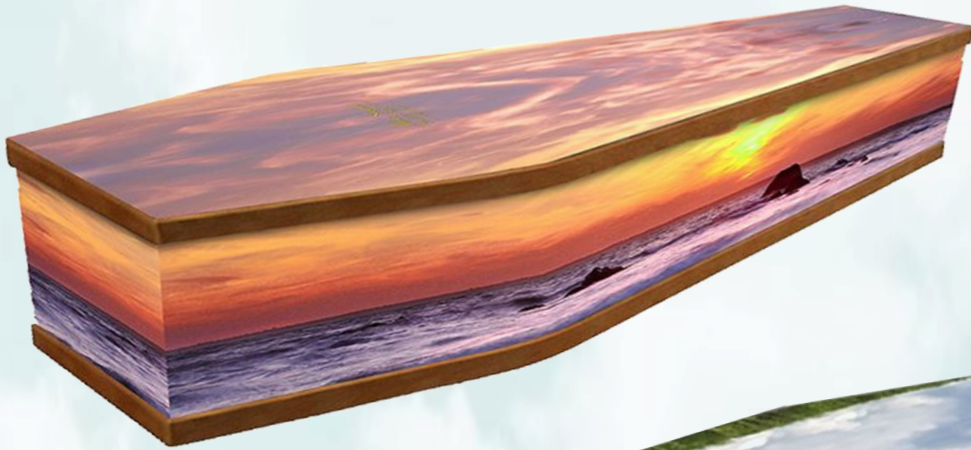
Navy Paisley



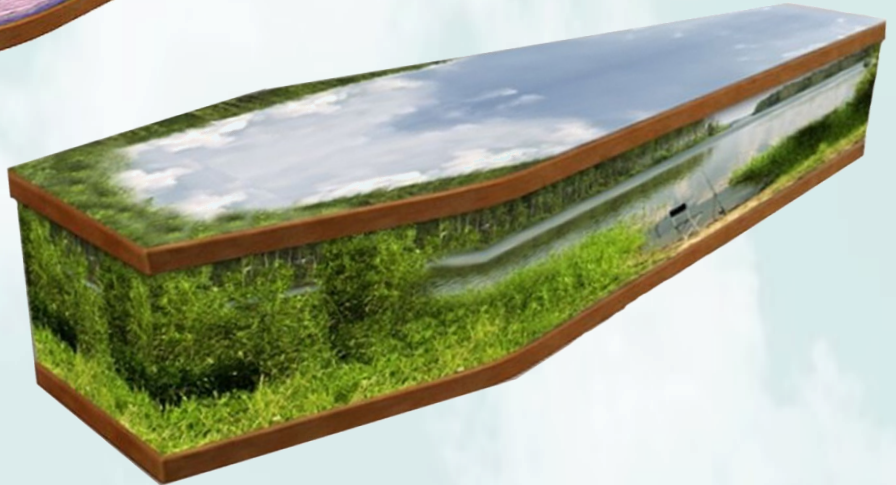
Maroon Paisley



Picture Coffins



Classic Wood Trim
from **£750**



Full Wrap
from **£950**



(Picture coffins are available in a wide range of styles)

Sussex Willow

A natural ethical and 100% eco-friendly coffin. Entirely handcrafted in Sussex by artisan willow craftsman, using time honoured weaving techniques, with local sustainable products. Available in either 'Natural' or 'Buff' willow options, comes with a wooden nameplate, & fully fitted eco-friendly calico liner - **£855.00**

'BUFF WILLOW'

A blend of buff willow and green willow



'NATURAL WILLOW'

100% raw untreated green willow



Somerset Willow

Available in 'Buff', or 'Weather-Beaten Gold', with a selection of contrasting bands and coloured handles or natural hemp. Entirely handmade, supplied with a carved wooden nameplate & natural calico interior - **£985**



(The example shown in the picture is 'Weather-beaten Gold')



Simple Willow

Naturally grown and golden in colour and highly sustainable.
Available in traditional or curved shape. Includes natural cotton calico interior
and carved wooden nameplate - **£845**



The Simple Willow is also available in white - **£915**

Seagrass

Naturally grown in fields that are flooded with seawater and hand crafted.
Sourced from environments where sustainability is employed.
Includes a cotton calico interior and carved wooden nameplate, available in curved or traditional shape. Seagrass coffins, along with other types, can be dressed with flowers to make them more personal - **£895**



Bamboo

Natural unstripped bamboo, buff colour, traditional shape or curved ends, harvested from a sustainable environment to ensure maximum regeneration. Includes a cotton calico interior and carved wooden nameplate. Hand crafted in a small family-run workshop - **£845**



Service Sheet Printing Charges

Service Sheet Pages	Price per copy, excl setup	One Off Set-Up Charge	Qty	Qty	Qty	Qty	Qty	Qty
			25	50	75	100	125	150
			(Incl. set-up)	(Incl. set-up)	(Incl. set-up)	(Incl. set-up)	(Incl. set-up)	(Incl. set-up)
4 page	£2.41	£47.50	107.75	168.00	228.25	288.50	348.75	409.00
6 page	£2.50	£75.00	137.50	200.00	262.50	325.00	387.50	450.00
8 page	£2.63	£85.00	150.75	216.50	282.25	348.00	413.75	479.50
10 page	£2.77	£95.00	164.25	233.50	302.75	372.00	441.25	510.50
12 page	£2.94	£100.00	173.50	247.00	320.50	394.00	467.50	541.00

- Service sheets are printed on our premises using 257gsm outer card, with 140gsm inner paper. The stock options of card & paper available are either white or pale cream.
- Quantities of less than 25 or more than 150 can be quoted for.
- Printing charges includes scanning of colour photos, design and setup of service sheet, proofing and colour printing.
- For heavier stock options we use external printing companies.

Burial of Ashes

Our charges for the burial of ashes, as set out below, use a number of different elements, depending on where and when the ashes are to be interred or scattered. Our arrangers will go through the various options available.

A) Our Professional Services; use of premises and facilities and all items of service and supplies needed to complete the arrangements. To include preparation of the ashes grave and our attendance at churchyard/cemetery on day of interment:

Interment on Weekday.....£230.00

Interment on Sat/Sun.....£345.00

OR

B) Our Professional Services, as detailed above,

but our personnel are not in attendance at interment of ashes,

and do not prepare or backfill the grave.....£135.00

OR

C) We make no arrangements and we are not in attendance on the day of interment.

Digging & preparation of an ashes Grave ONLY. (Note: we do not back-fill the grave)

New Single Depth, or Re-open of existing grave.....£95.00

New Double Depth.....£145.00

PLUS OTHER COST OPTIONS

'Mayfield' Knotty Oak Veneer Ashes Casket.....£115.00

'Grosvenor' Solid Oak Ashes Casket.....£155.00

(Please note that some Church of England Diocese do not allow ashes caskets to be buried in their churchyards)

Church Interment Fee (includes minister fee £50.00).....£192.00

Cemetery Interment Fee.....variable

Minister's Fee for interment in churchyard.....£50.00

Minister's Fee for interment in cemetery.....£34.00

Supply of Temporary Grave Marker.....£25.00

Packaging and delivery of ashes by specialist or private courier.....POA

Scatter Tubes

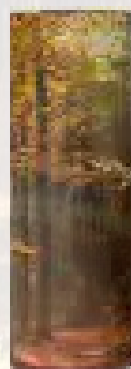
Scatter tubes are an alternative option to traditional wooden ashes caskets. Easy to use for scattering ashes the scatter tube range allows greater choice when deciding the best way to preserve, or to remember someone close.



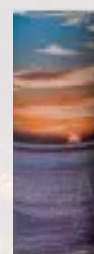
Large



Medium



Small



Token

Scatter tubes are available in 4 sizes, with prices ranging from £30 - £15

Wooden Ashes Caskets



'Mayfield'
Knotty Oak Wood Veneer Urn
£115.00



'Grosvenor'
Solid Oak Wood Urn
£155.00

SERVING THE COMMUNITY
SINCE 1926

C. WATERHOUSE & SONS
FUNERAL SERVICE

Mabel's Cottage, High Street
Burwash, East Sussex TN19 7ET
www.cwaterhouse.co.uk
Tel: 01435 882219

SERVING THE COMMUNITY
SINCE 1988

HEATHFIELD
FUNERAL SERVICE

Holmrook, Hailsham Road
Heathfield, East Sussex
TN21 8AE
www.heathfieldfunerals.co.uk
Tel: 01435 862648



Traditional values, with a modern approach

Price List Updated 08.04.24